

MONTHLY MEMBERSHIP PROGRESS REPORT

District 317 B

Results as of: 9/30/2023

GMT:

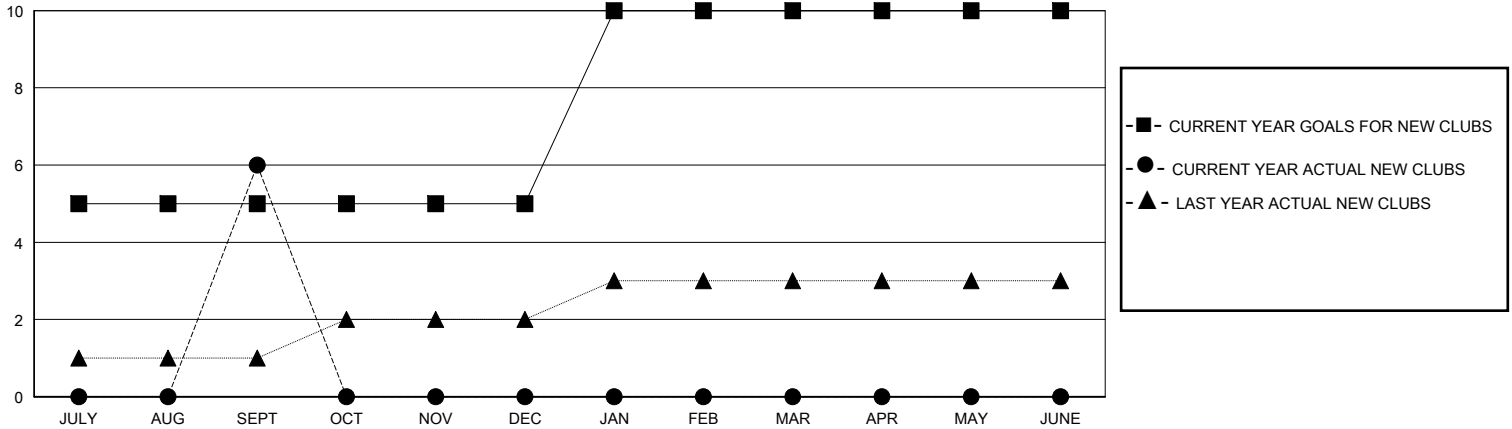
LOCATION INDIA

GMT CA

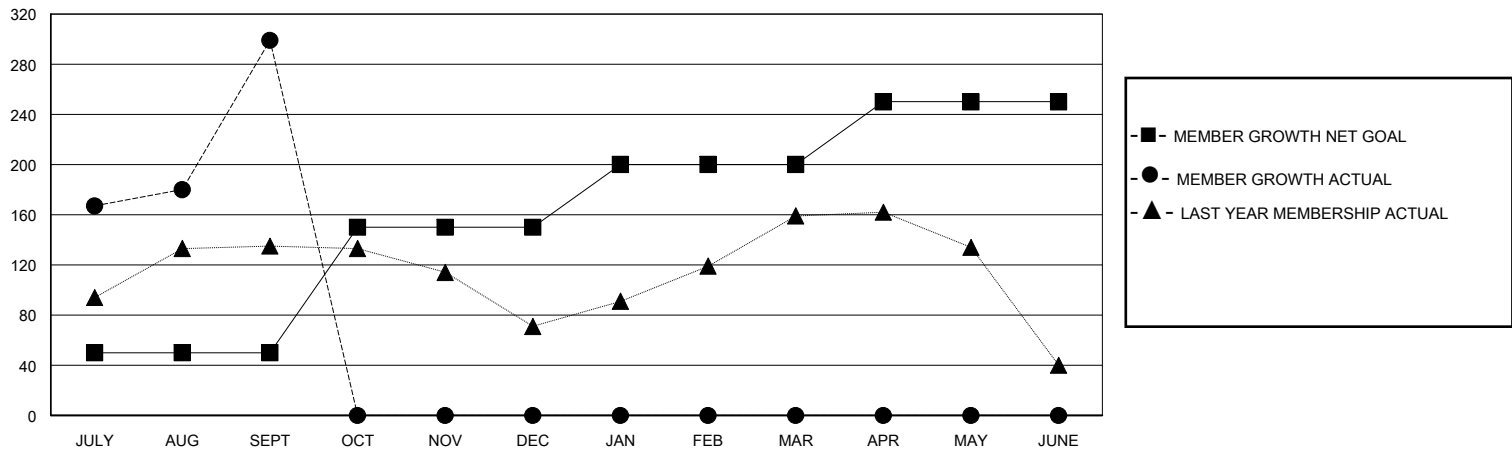
Clubs			
RESULTS FOR 2023-2024			
QUARTER	NEW CLUB GOAL	NEW CLUBS	DROPPED CLUBS
JULY/AUG/SEPT	5	6	0
OCT/NOV/DEC	0	0	0
JAN/FEB/MAR	5	0	0
APR/MAY/JUNE	0	0	0

Members			
RESULTS FOR 2023-2024			
QUARTER	MEMBER GROWTH NET GOAL	MEMBER GROWTH ACTUAL	DROPPED MEMBERS ACTUAL (including transfers)
JULY/AUG/SEPT	50	371	65
OCT/NOV/DEC	100	0	0
JAN/FEB/MAR	50	0	0
APR/MAY/JUNE	50	0	0

GOALS AND ACTUAL NEW CLUBS CUMULATIVE



GOALS AND ACTUAL MEMBERS CUMULATIVE



DROPPED CLUBS: 0 DROPPED MEMBERS DECEASED 4 CLUB CANCELLED 0 OTHER 61 TOTAL 65	54 CLUBS OF 110 ADDED 1 OR MORE NEW MEMBERS	GENDER DISTRIBUTION MALE 3,000 (78.23%) FEMALE 835 (21.77%)
	CLICK HERE FOR CUMULATIVE MEMBERSHIP DATA	TOTAL FAMILY UNIT MEMBERS 1,327 FAMILY MEMBERS PAYING HALF DUES 731